

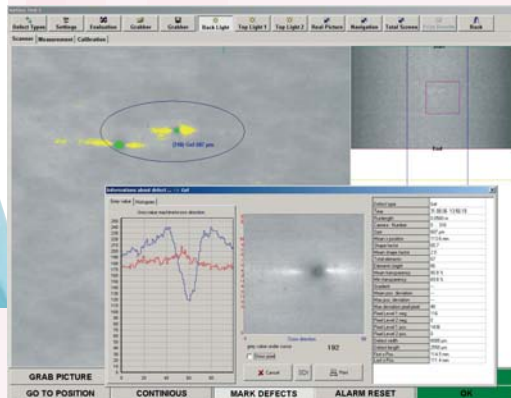
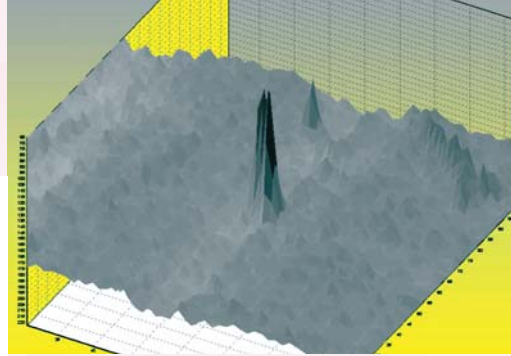
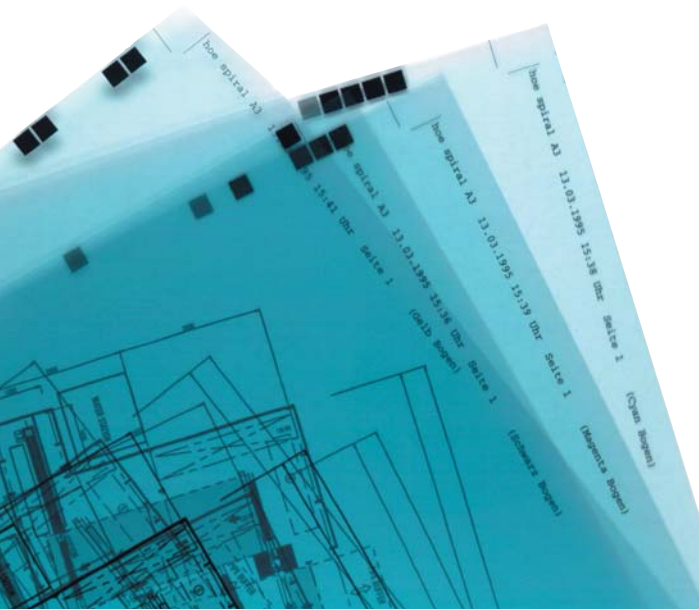
The Solution for the Polymer Industry



Surface Inspection ST4

The Original by OCS

Sample Testing System ST4



Application

The Sample Testing System ST4 was designed as a bench unit for laboratory and R&D use, delivering precise inspection of transparent, such as PE, PP, PS, PC, films, sheets or plates, as well as non-transparent surfaces, such as steel, paper, textiles etc.

The system examines the material for irregularities, contamination, gels, fish eyes, scratches, holes etc. with high resolution.

Two lighting techniques can be applied depending on the material. The transmission mode is used for transparent material whereas the reflection mode is applied for non-transparent material.

For the scanning process the testing material is fixed on a frame which automatically moves it with highest

precision between the lighting unit and the line camera in case of transparent material, or in front of the lighting unit and the camera in case of non-transparent material.

Software

The system software is user friendly, menu-driven, using the latest Windows version as operating system, e.g. XP Professional.

The scanned sample can be precisely analysed, classifying detected defects in different sizes and shapes, and counting all defects with an option for statistical evaluation per defined area (m², ft² etc.)

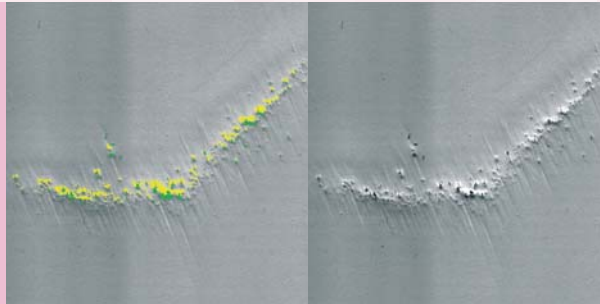
The software has a "teaching"-function which allows the system to "remember" defined defect types.

Different tables, graphs and images can be reported and printed by the system, or alternatively transferred via Ethernet or Modbus.

Technical data

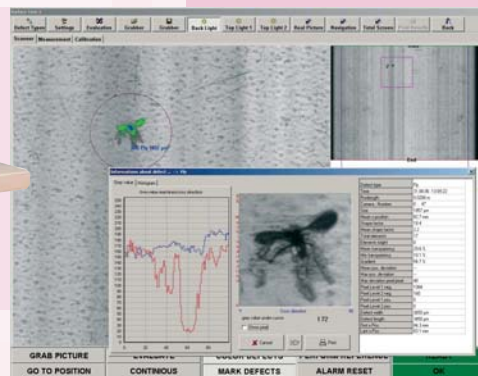
Camera

Function principle	CCD-line camera
Sensor length	4096 pixel/other on request
Inspection width	0,8 mm to 200 mm (adjustable)



Evaluated defect

Scanned defect



Inspection length	0,8 mm to 400 mm (adjustable)
Resolution	50 µm, 25 µm, 10 µm/ others on request
Working temperature	10°C - 35°C
Lighting unit	
Lighting technique	special LED line
Construction	Reflection, transmission or combined mode
Lighting width	250 mm/other on request
Working temperature	10°C - 35°C
Image processing unit	
Computer	integrated Image Processing Computer with Ethernet connection

Processor	Intel Pentium IV or latest technology
Operating System	Windows XP Professional or latest technology
Power supply	220 V / 110 VAC 50/60 Hz
Processing speed	80.000.000 pixel/sec
Dimension	500 x 600 x 8000 mm
Weight	approx. 50 kg

Technical variation reserved.

The ST4 testing system is a compact table unit. All components are well integrated and easy accessible for maintenance and replacement.

Benefits

- **Efficient, objective and reproducible laboratory evaluation**
- **Optimised quality**
- **Increased competitiveness by automated quality control**
- **Precise and consistent quality evaluation**
- **Reduced customer complaints and returns**
- **Faster inspection**

Suitable for Research & Development, for laboratory use and for statistical production control.



Optical Control Systems GmbH

Wullener Feld 24
58454 Witten, Germany
Tel: +49 (0) 2302 95622-0
Fax: +49 (0) 2302 95622-33
e-mail: info@ocsgmbh.com
<http://www.ocsgmbh.com>

